

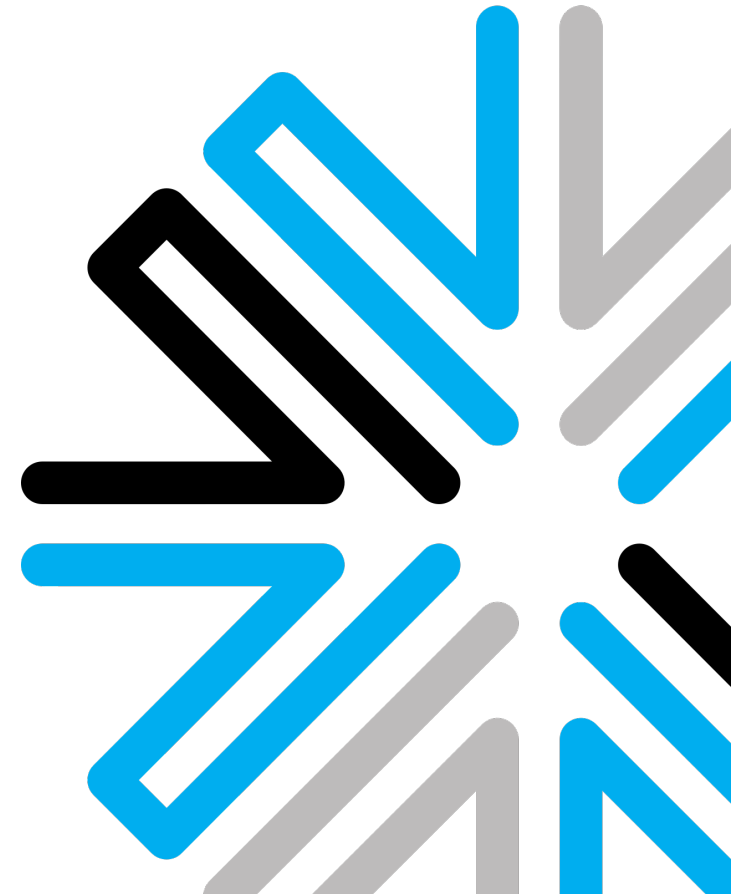
# Payments Direction

## Payments Modernisation Plan

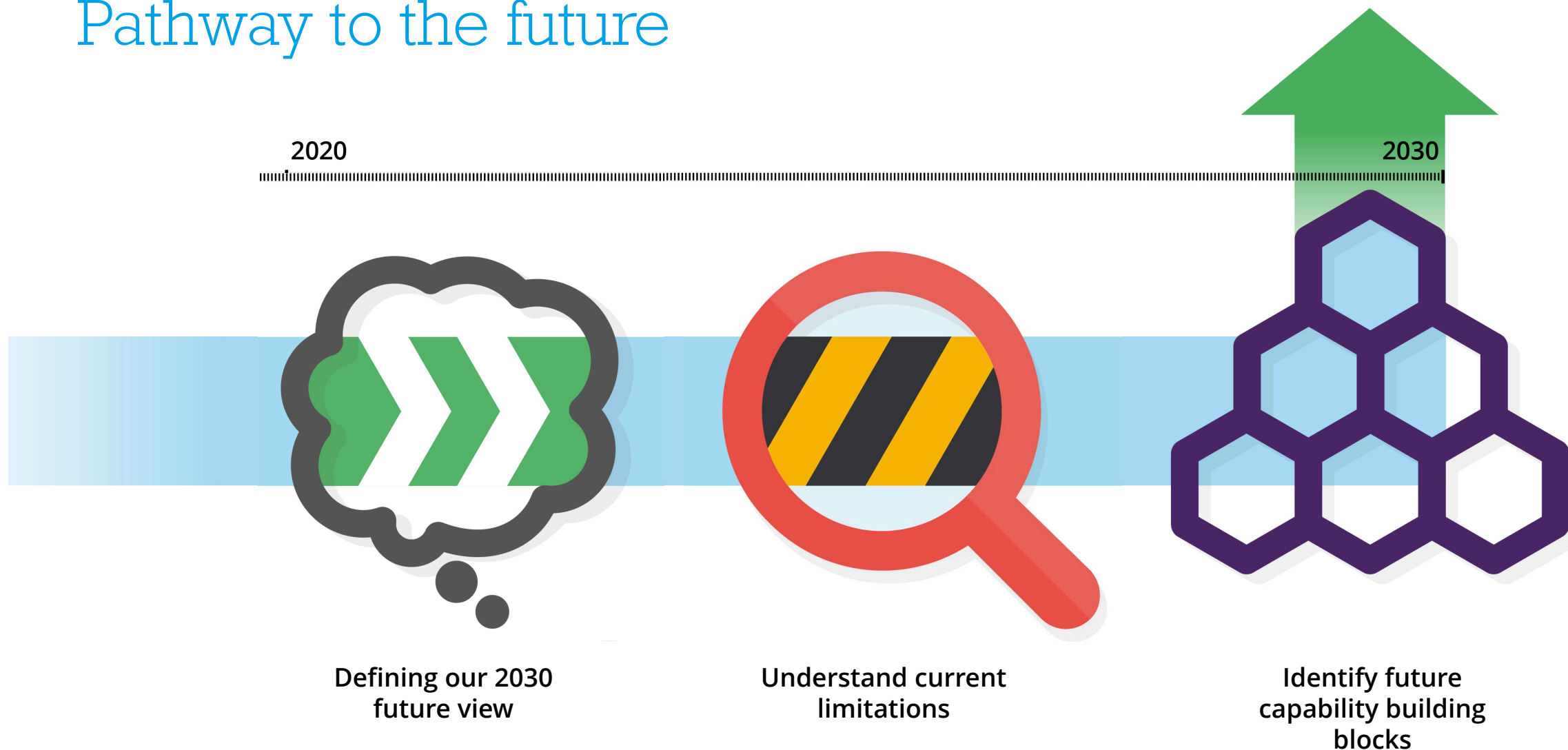


Jane-Renee Retimana

**GM Strategy and Corporate Affairs**



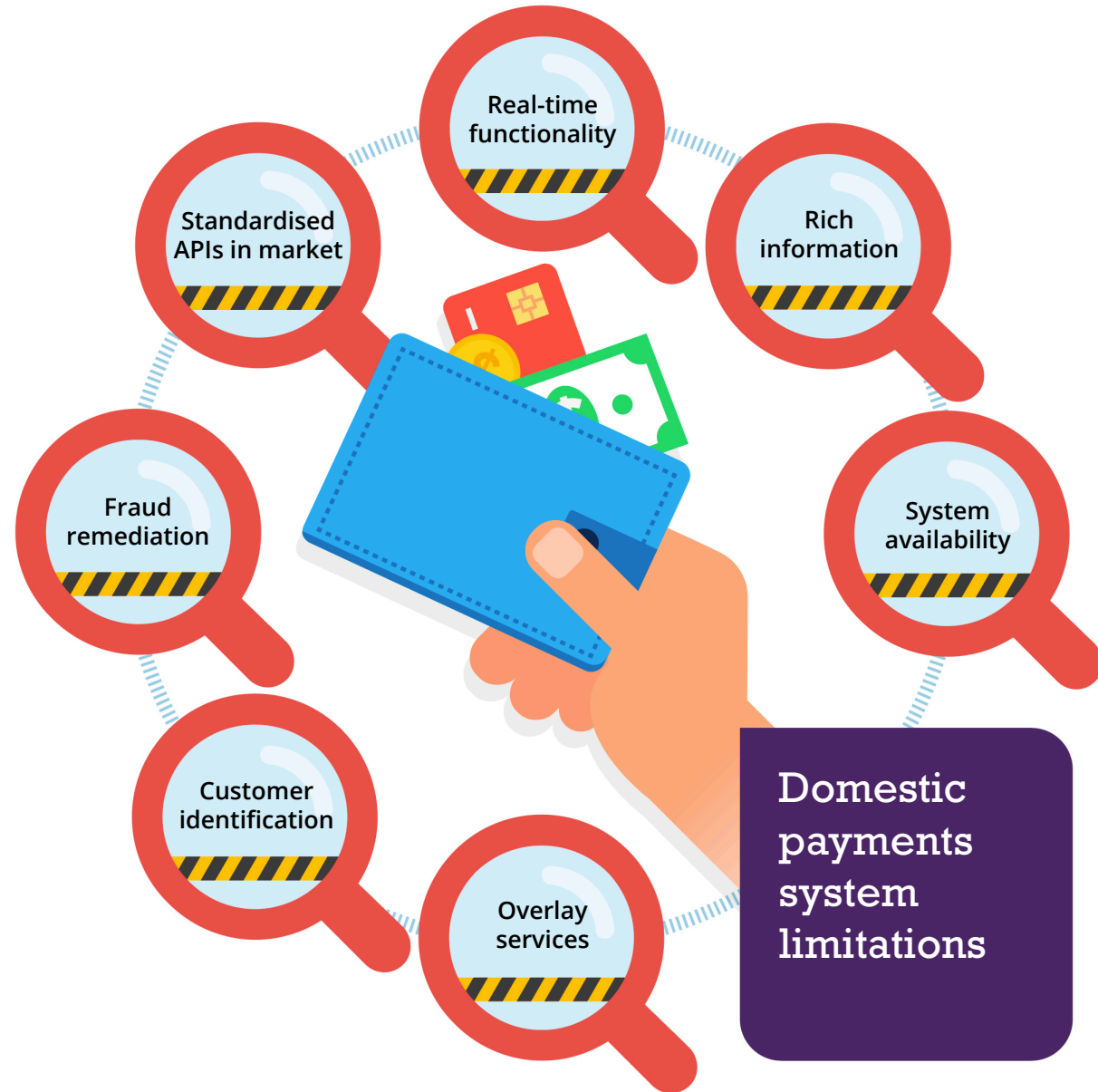
# Pathway to the future



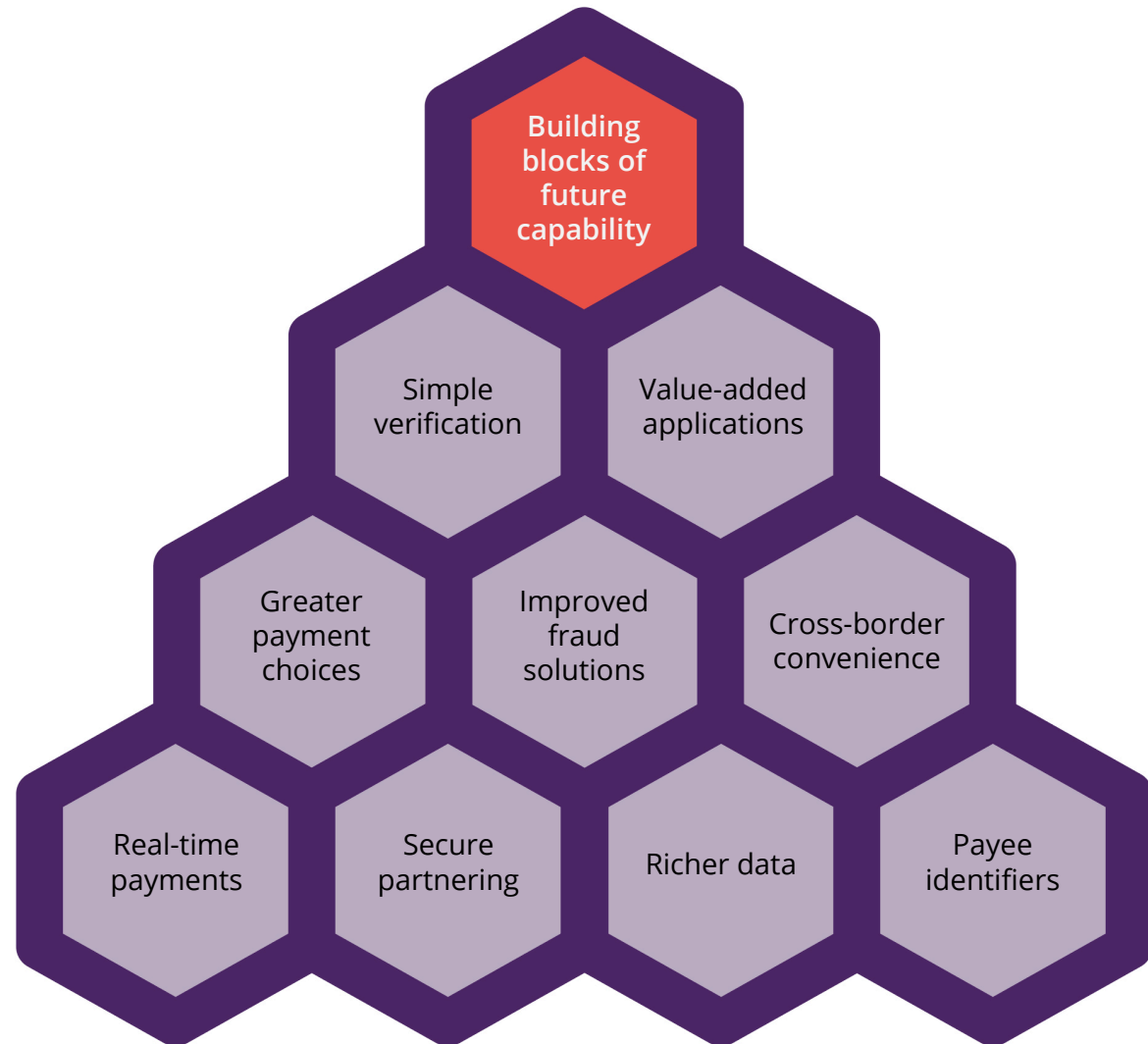
# 2030 Future view



# Current limitations



# Building blocks for the future



# Share your thoughts with us...



[www.paymentsnz.co.nz/pmp](http://www.paymentsnz.co.nz/pmp)